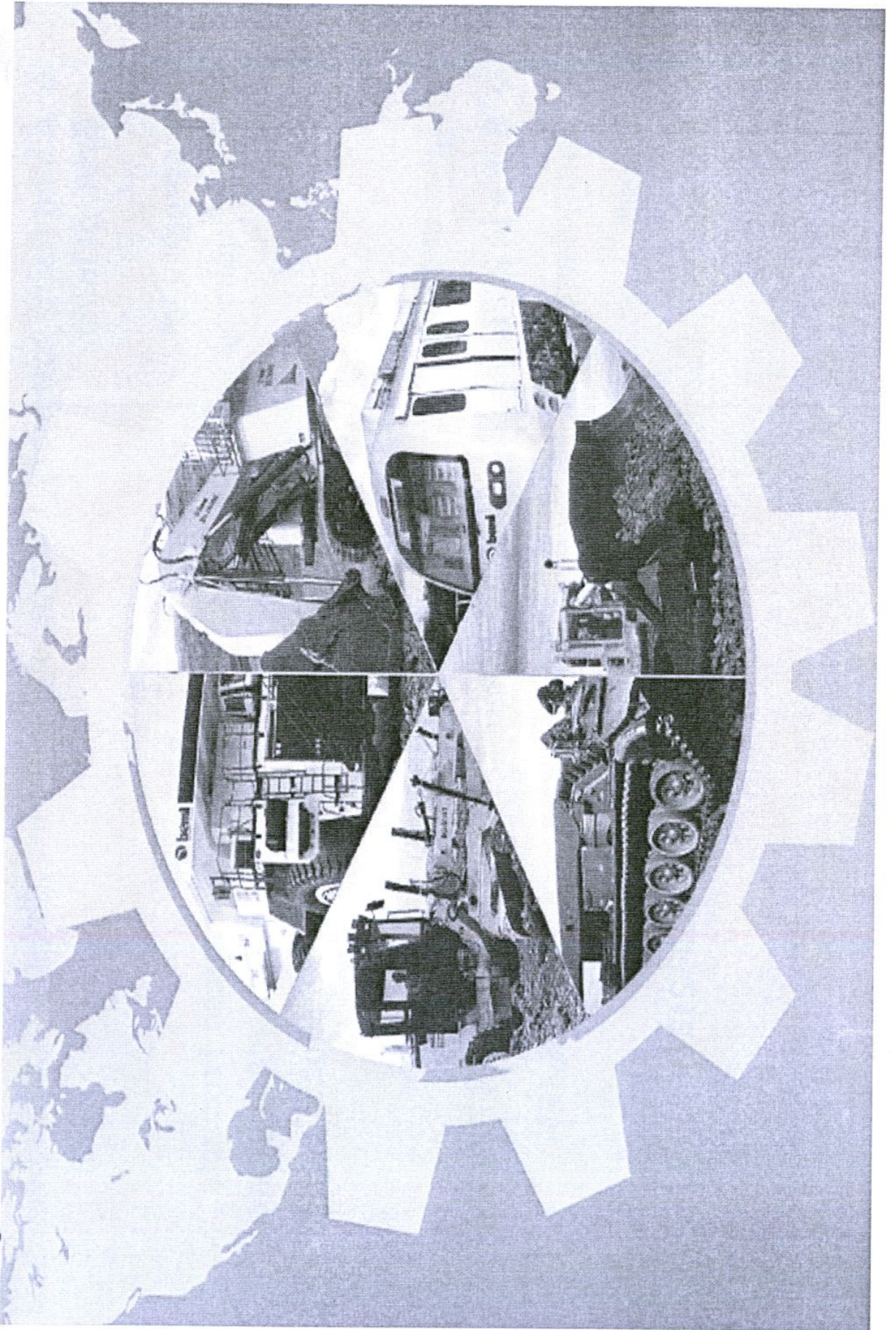


# WELCOME TO BEML LIMITED





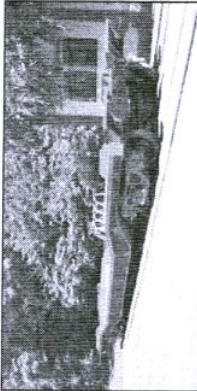
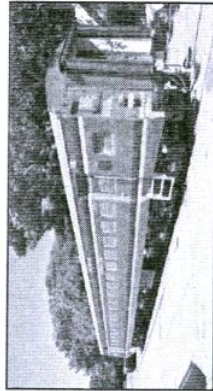
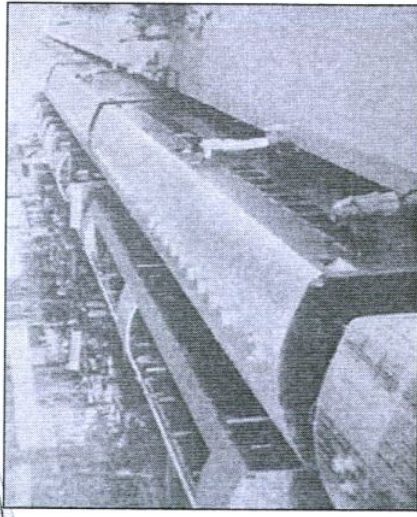
## BENL – A GLIMPSE

- ❖ A Mini Ratna 'category 1' Company under the Ministry of Defence, Govt. of India.
- ❖ Incorporated : 11<sup>th</sup> May 1964
- ❖ Core Business :
  - Defence & Aerospace Products
  - Mining & Construction Equipment
  - Railway & Metro Products
- ❖ Sales in 1966 : USD 782,000
- ❖ Sales in 2019 : USD 470 Million ( INR 3481 Crores)
- ❖ Equity base : USD 6.5 Million GoI 54%, 46%
- Others
- ❖ Net worth - March 2019 : USD 296 Million (INR 2187)

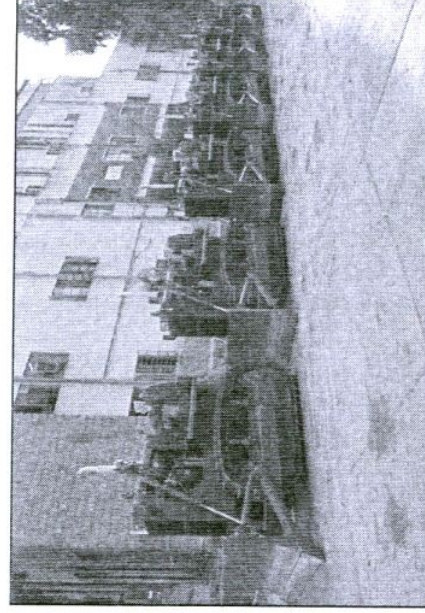


# HISTORY

1964



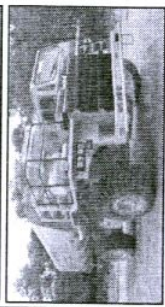
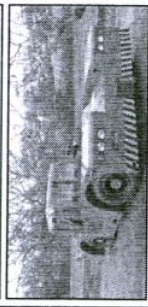
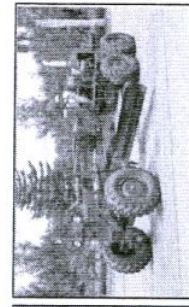
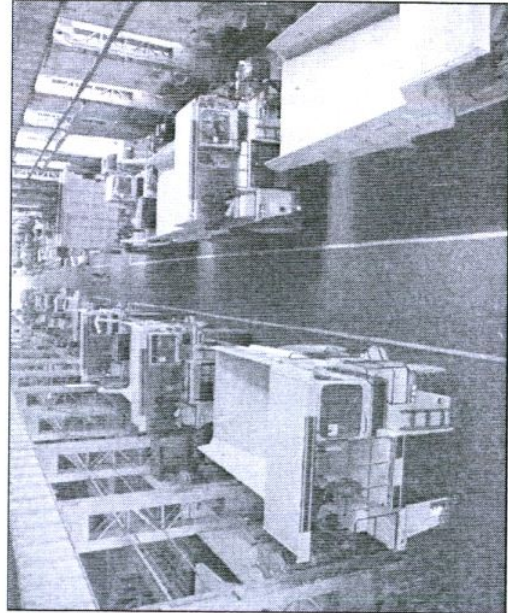
1967



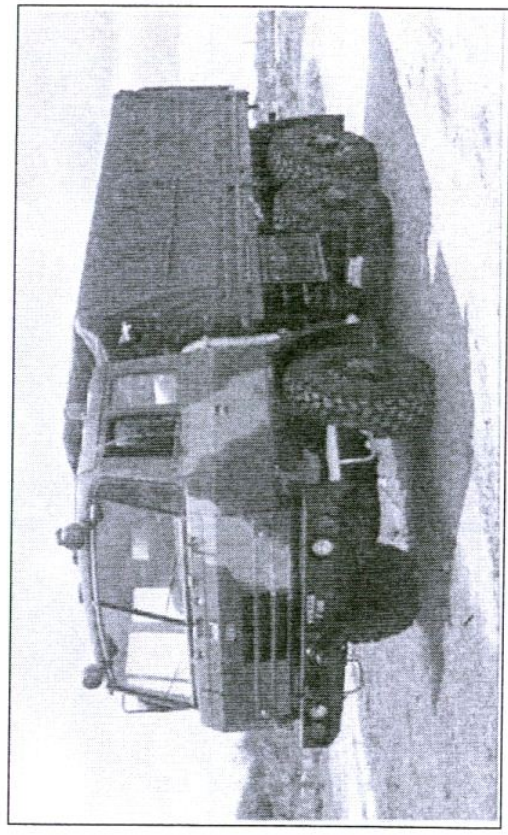
Rail Manufacturing facility, Bangalore

Earth Movers Division, KGF

1985



1986



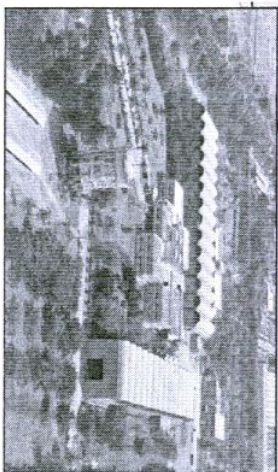
Truck Division, Mysore

Tatra Production



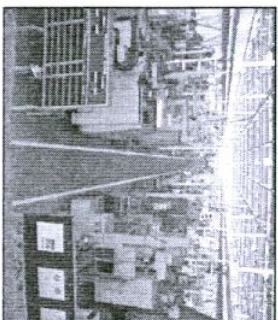
# HISTORY

1987



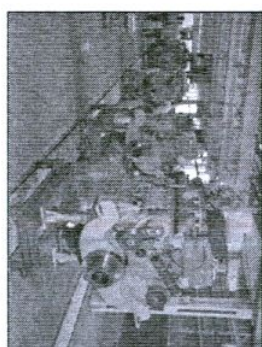
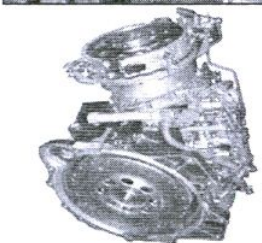
R&D Centre at KGF

1987



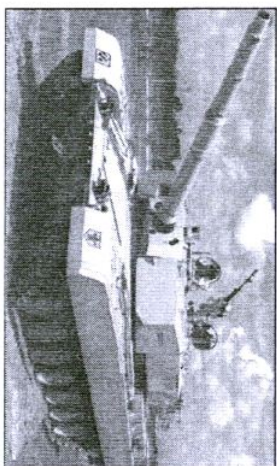
Hydraulic & Powerline Division

1991



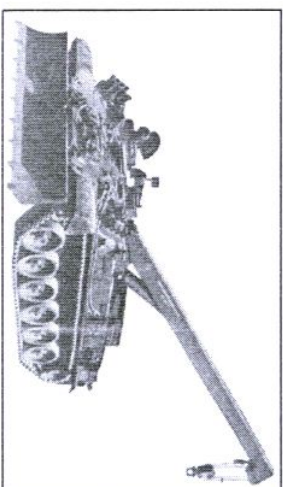
Engine Division

1995



Arjun MBT

2000



ARV

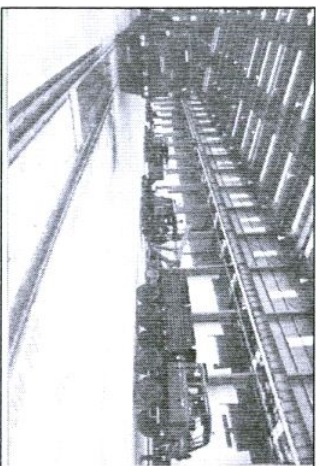
2003



Metro Car

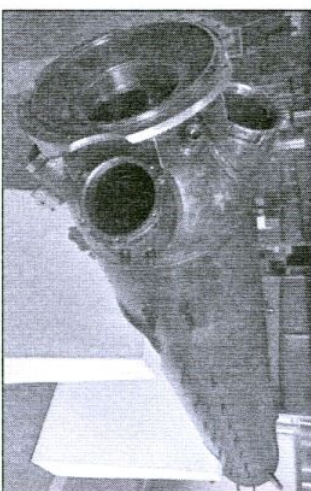
1994- IPO  
Issued

2010



Palakkad Complex

2015



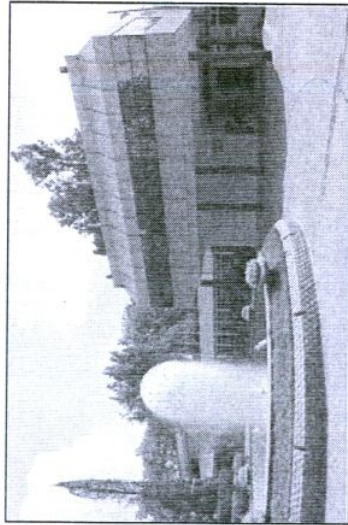
Missile Aggregates



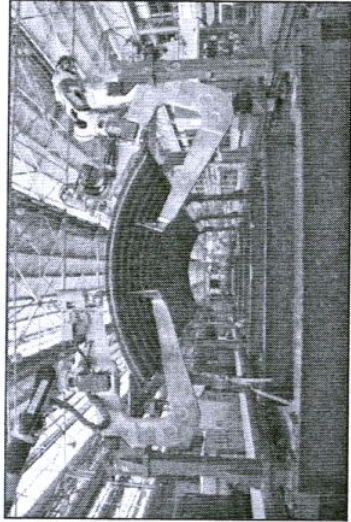
2006 – Conferred  
Mini Ratna Status



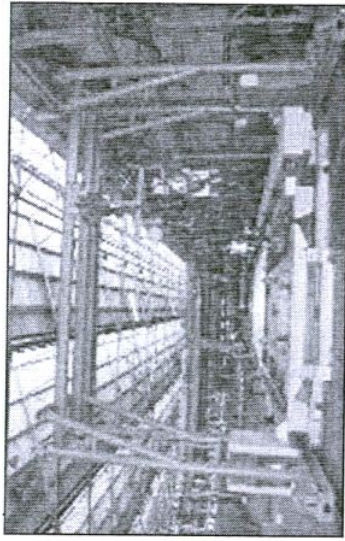
## MANUFACTURING COMPLEX – BANGALORE (1964)



ADMINISTRATIVE BUILDING



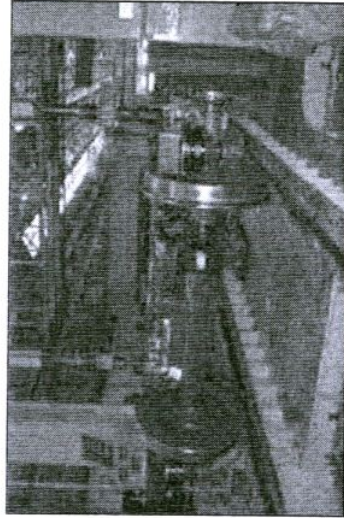
METRO ROOF WELDING



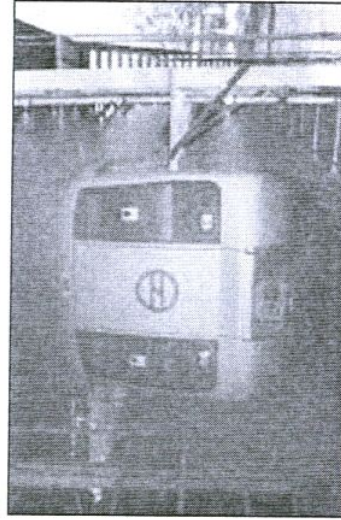
U/F MAIN ASSY



CABLE DUCTS



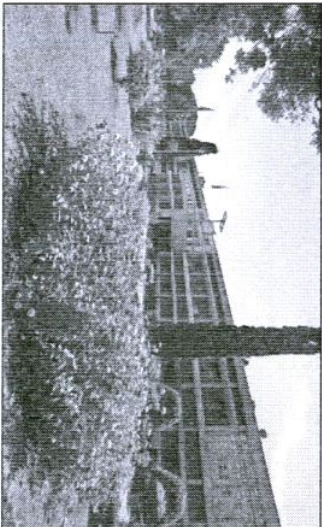
BOGIE LOAD TEST



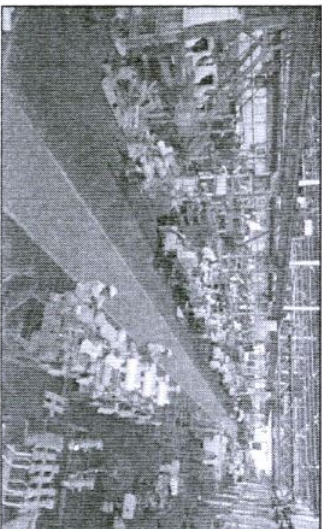
WATER TIGHTNESS TEST



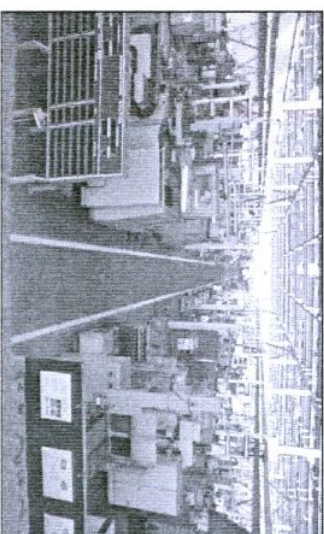
# MANUFACTURING COMPLEX – KOLAR GOLD FIELDS (1967)



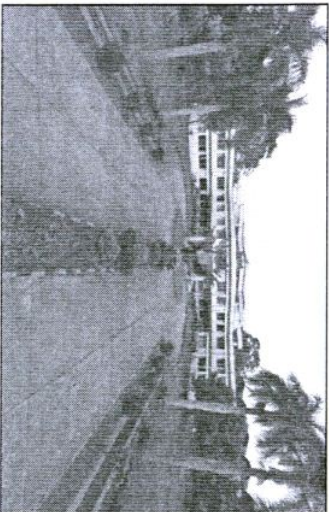
ADMINISTRATIVE BUILDING  
 – EM DIVISION



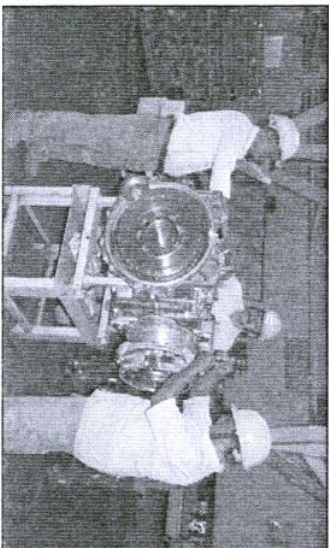
DOZER ASSEMBLY SHOP



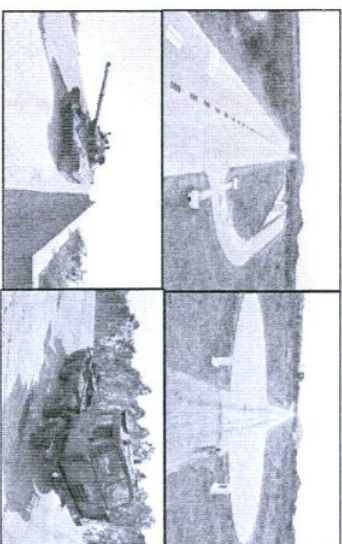
TRANSMISSION SHOP – H&P DIVISION



R&D DIVISION



BMP TRANSMISSION  
 ASSEMBLY



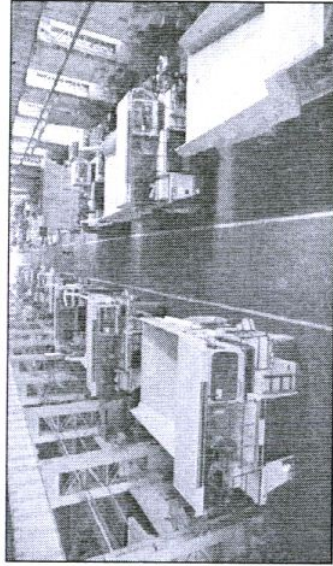
TEST TRACK



# MANUFACTURING COMPLEX - MYSORE (1985)



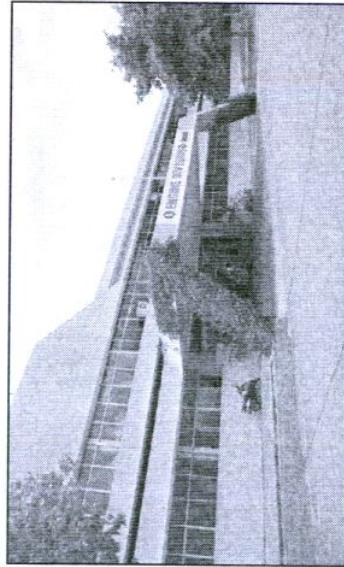
ADMINISTRATIVE BUILDING  
- TRUCK DIVISION



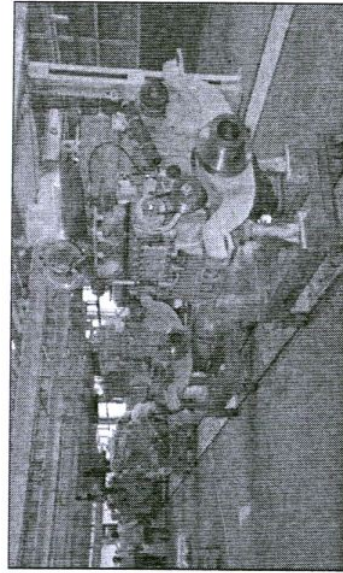
HEAVY ASSEMBLY SHOP



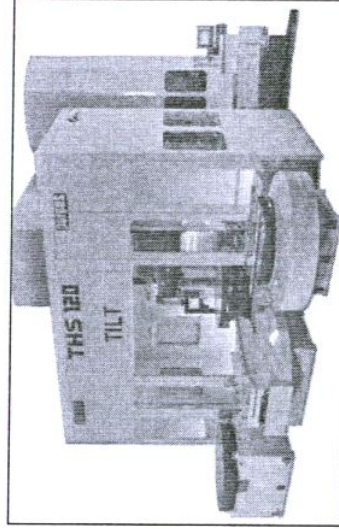
WELDING ROBOT



ADMINISTRATIVE BUILDING  
- ENGINE DIVISION



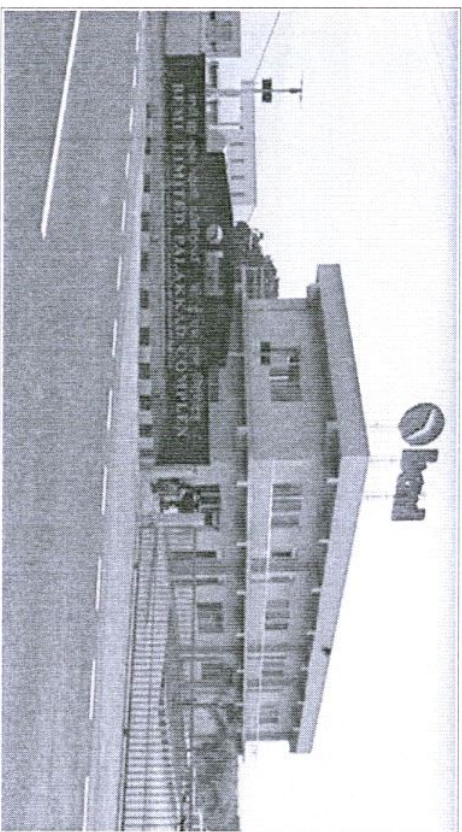
ENGINE ASSEMBLY SHOP



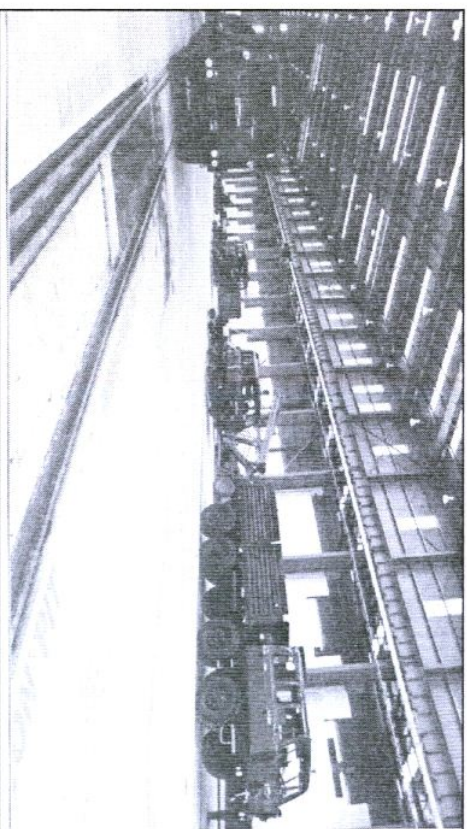
MOVING COLUMN MACHINING CENTRE



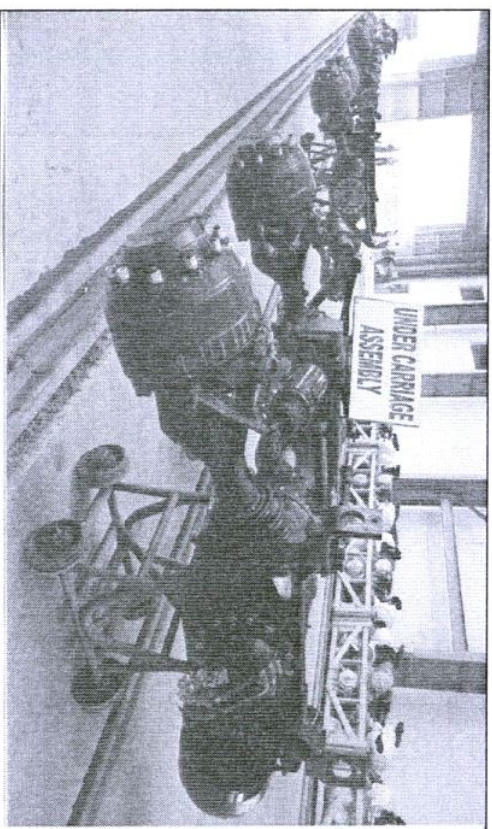
## MANUFACTURING COMPLEX - PALAKKAD (2010)



ADMINISTRATIVE BUILDING



HMV 8X8 ASSEMBLY SHOP



UNDER CARRIAGE ASSEMBLY SHOP



RAIL FACILITY



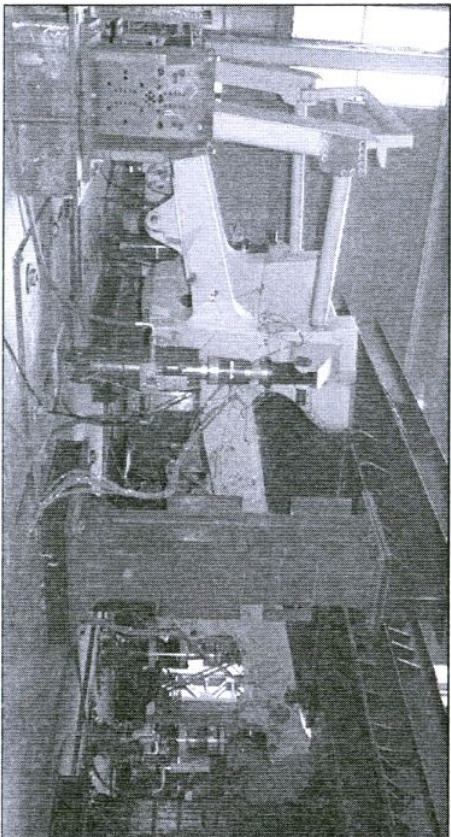
## RESEARCH & DEVELOPMENT

- R&D Centers at KGF, Mysore, Bangalore & Palakkad.
- R&D Complex at KGF established in 1987.
  - ❖ Powerline Lab
  - ❖ Structural Lab
  - ❖ Fluid Power Lab
  - ❖ Material Science Lab
  - ❖ CAD Centre
- 136 Patents Filed
- Industry Academia Interface
- Centre of Excellence at each Complex
- R&D Labs – Used by CPSEs / Govt. Organizations / Private Sector
- R&D Expenditure – 3.09% of Sales

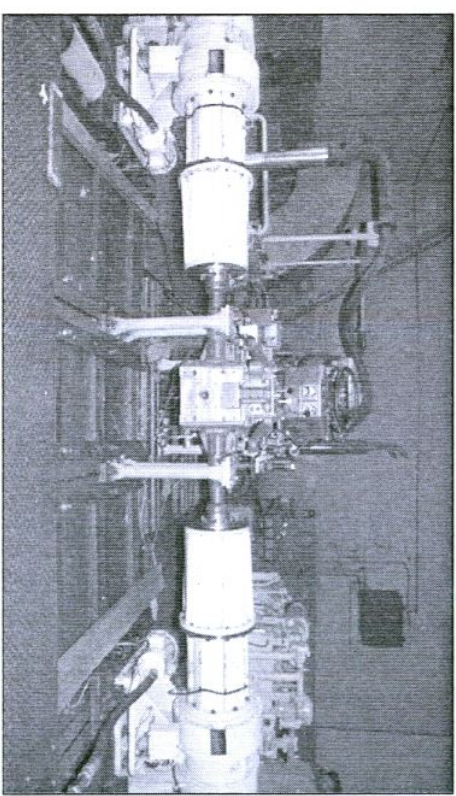


## MAJOR TEST FACILITIES AT R&D CENTRE

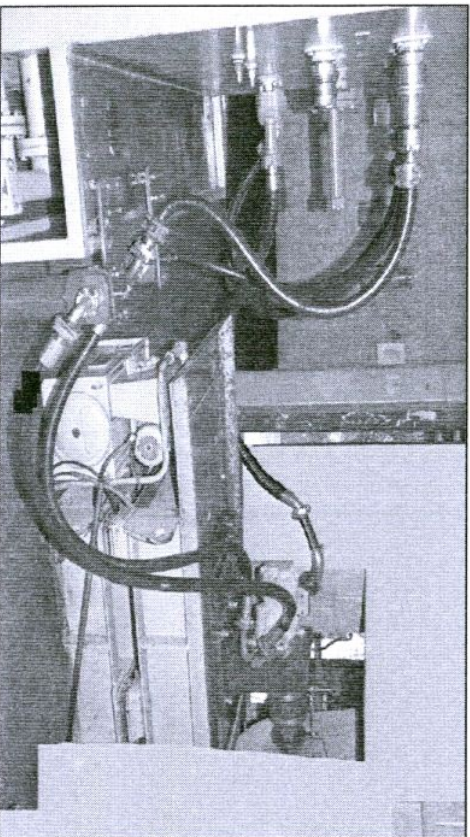
**Fatigue Testing**



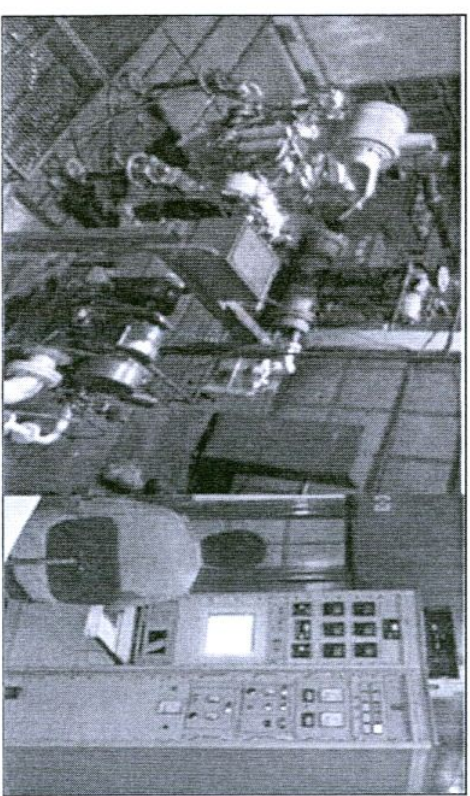
**Axle Test Rig**



**Pump Test Rig**



**Engine Test Rig**



**OPEN TO PRIVATE SECTOR - MSEs**



# BUSINESS GROUPS



Mining & Construction Group



Defence & Aerospace Group



Rail & Metro Group



International Division

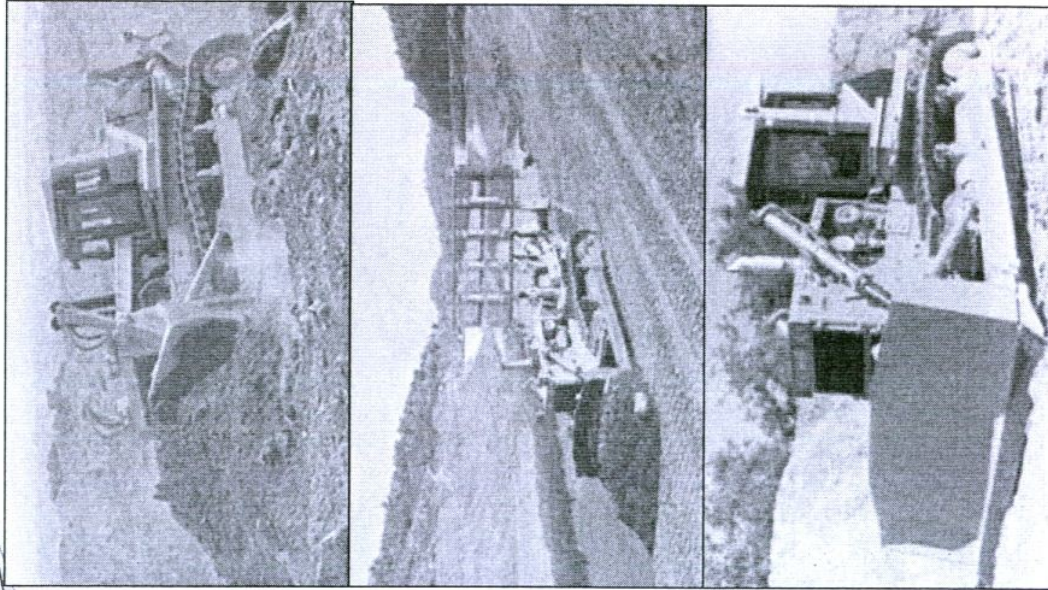


# ***MINING & CONSTRUCTION PRODUCTS***

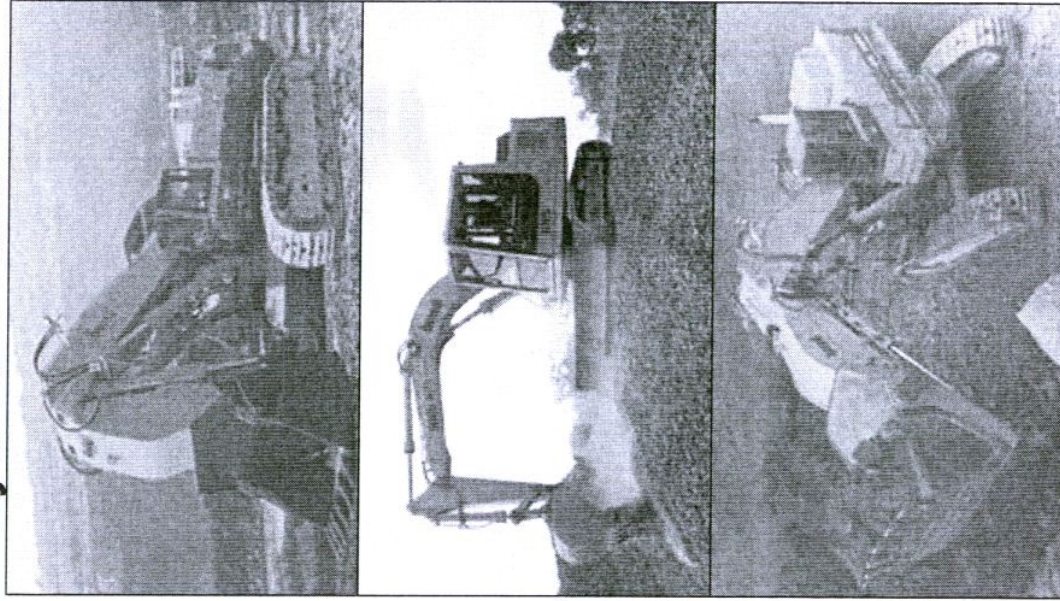


# MINING & CONSTRUCTION EQUIPMENT

## Crawler Dozer



## Hydraulic Excavator



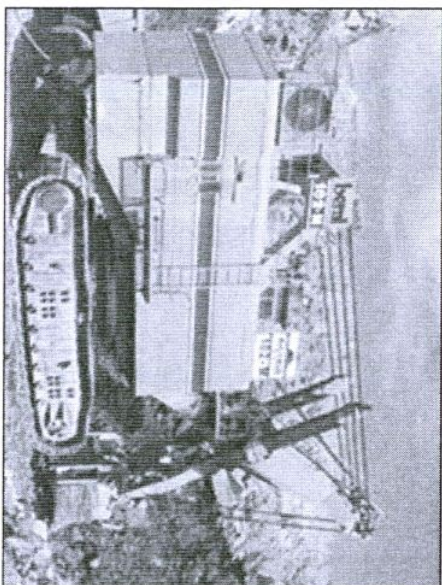
DOZER	
Model	Capacity (HP)
BD 475	860
BD 355	416
BD 155	324
BD 65	165

EXCAVATOR		
Model	Operating Wt. (T)	Bucket Capacity (Cum)
BE 1800E	170	10.5 ~ 12.3
BE 1000	100	3.1 ~ 7.0
BE 700	70	2.4 - 5.0
BE 300	30	0.5 ~ 1.8
BE 220G	22	0.44 ~ 1.26

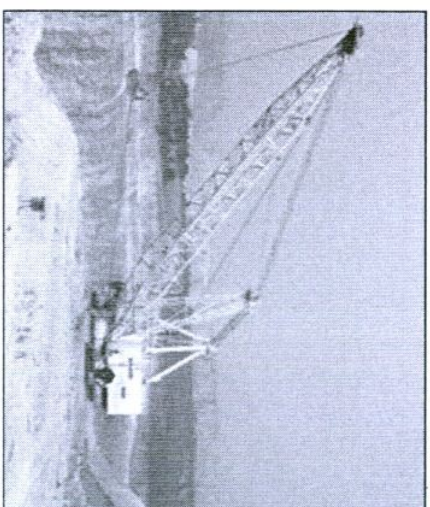
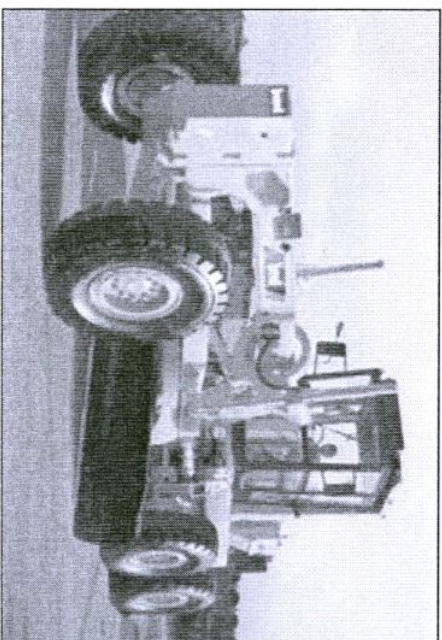


## MINING & CONSTRUCTION EQUIPMENT

Rope Shovel - 6.9 to 42 Cu.m



MOTOR GRADER

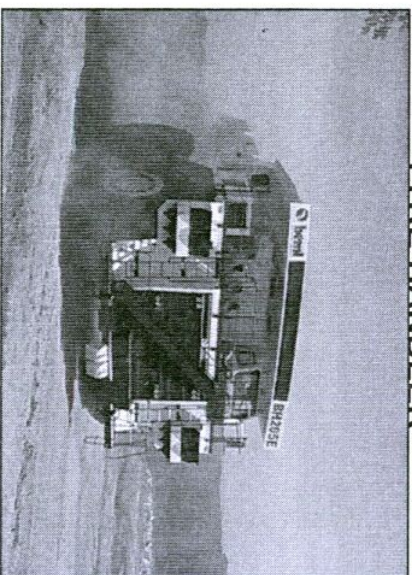


W2000 - 24/33 Cu.m Bucket,

W2000 - 24/33 Cu.m Bucket,



TYRE HANDLER

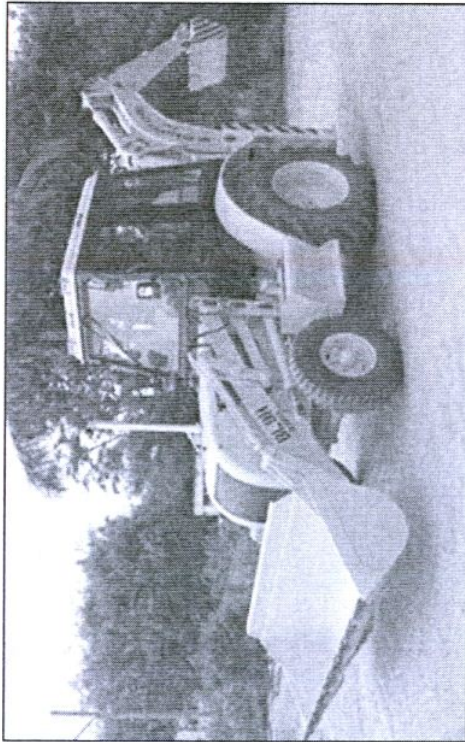


DUMPERS	
Model	Pay load (T)
BH205E (ELECT DRIVE)	186
BH150E (ELECT DRIVE)	136
BH100	91.5
BH60	54.5
BH 35-2	31.75



# CONSTRUCTION EQUIPMENT

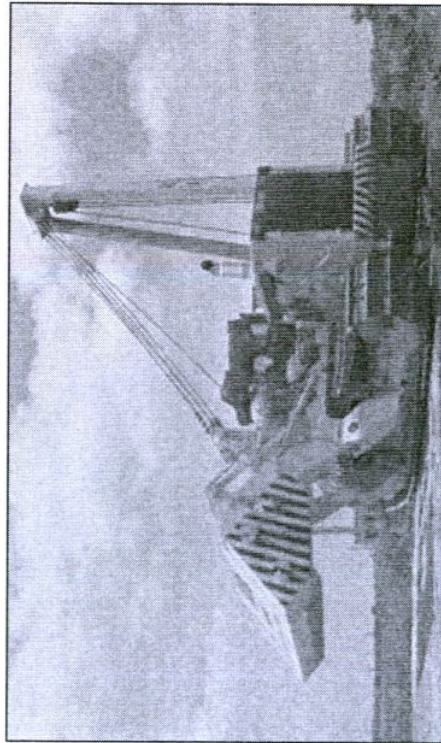
BACKHOE LOADER



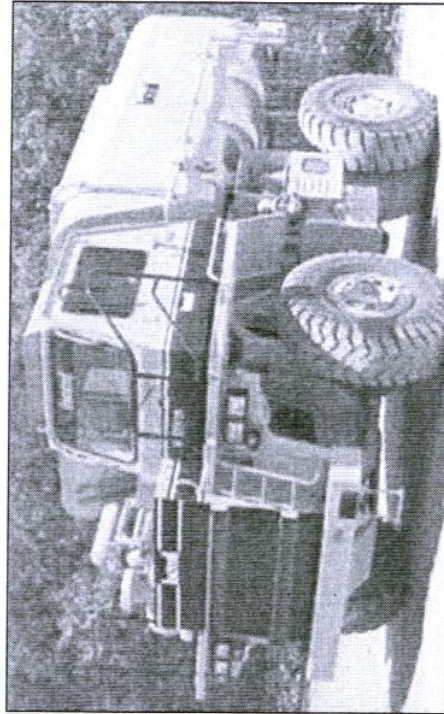
WHEEL LOADER



PIPE LAYER



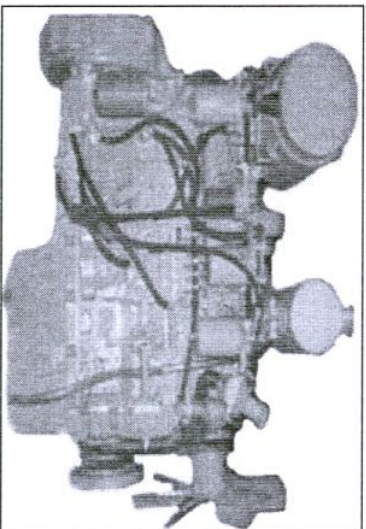
WATER SPRINKLER



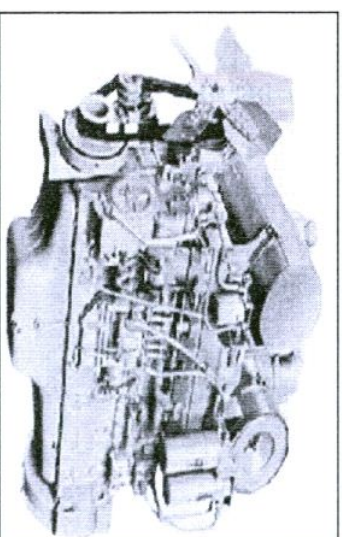


# ENGINES, DG SETS & HYDRAULIC AGGREGATES

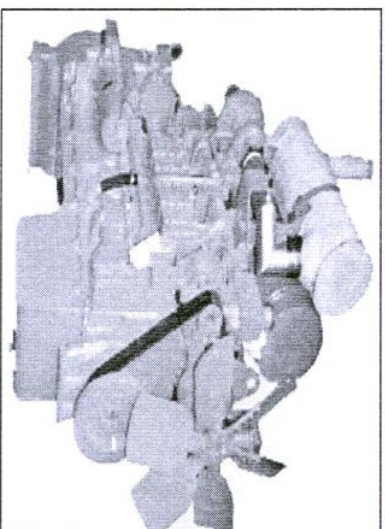
BS6D105-1 ENGINE



BS6D140-1 ENGINE



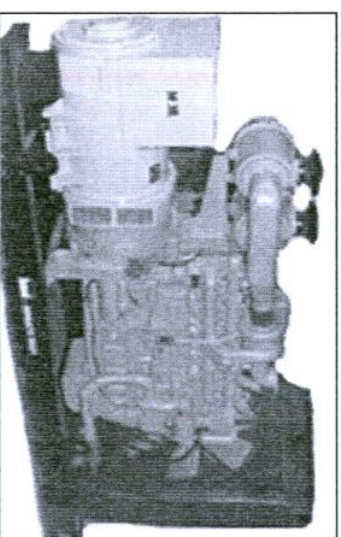
BS6D125-1 ENGINE



BS6D170-1 ENGINE



500 KVA GENERATOR SET



HYDRAULIC AGGREGATES

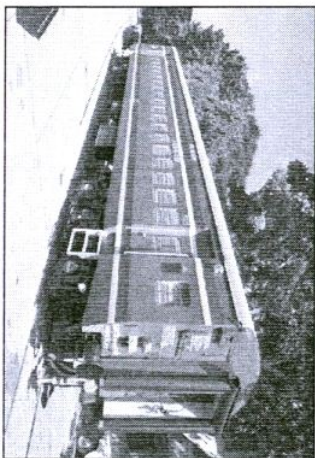




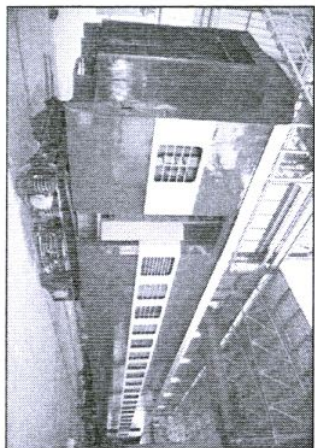
# ***RAIL & METRO PRODUCTS***



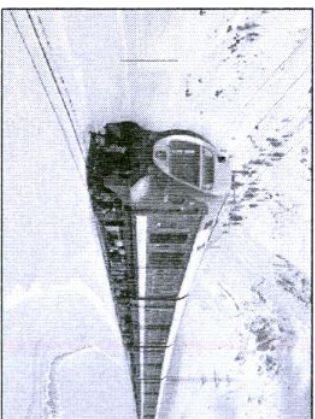
## ROLLING STOCK



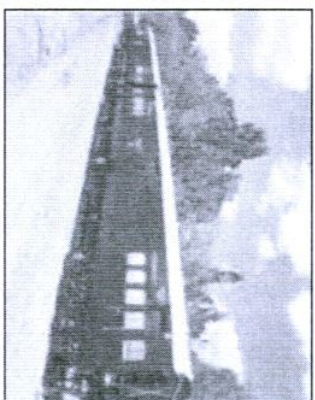
MIL RAIL



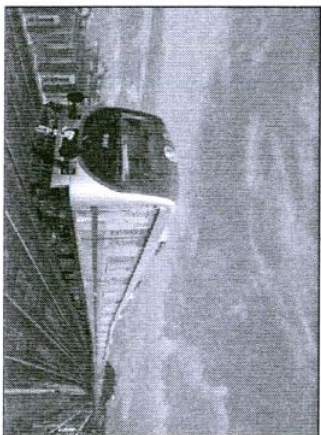
RAIL COACHES



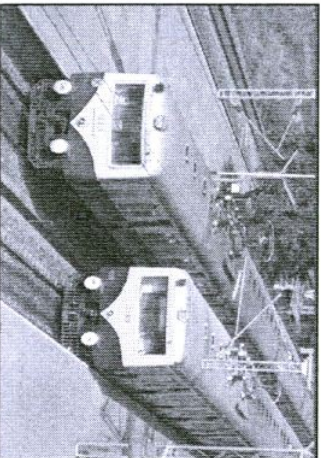
DIESEL ELECTRIC  
MULTIPLE UNIT



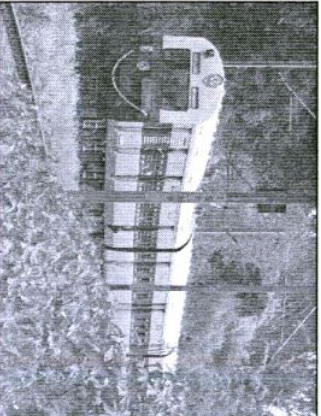
TREASURY VAN



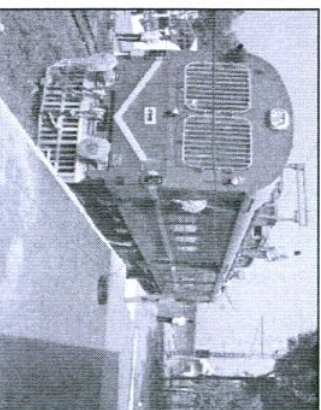
STAINLESS STEEL  
ELECTRIC MULTIPLE  
UNIT



ALTERNATE CURRENT  
ELECTRIC MULTIPLE UNIT



MAINLINE ELECTRIC  
MULTIPLE UNIT



CATENARY  
MAINTENANCE VEHICLE



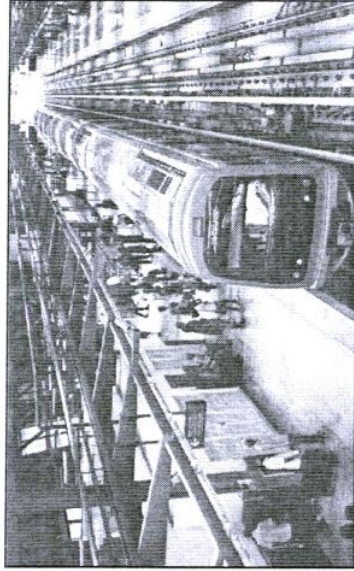
## METRO CARS



**DELHI METRO – RS1 (BG)**  
Qty: 220 cars



**DELHI METRO – RS3 & RS9(SG)**  
Qty: 196 cars + 162 cars



**BANGALORE METRO – (SG)**  
Qty: 150 cars + 150 cars



**Intermediate Cars – BG**  
(DMRC RS4 - 8 cars  
& RS6 – 136 cars )



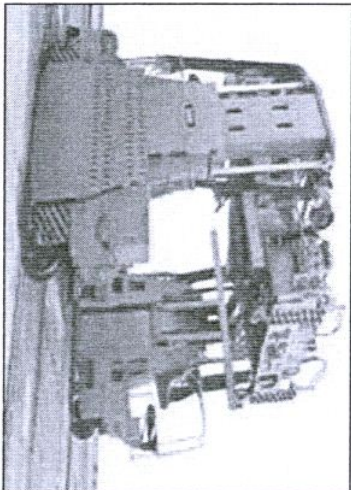
**Jaipur Metro Cars SG**  
Qty: 40 cars



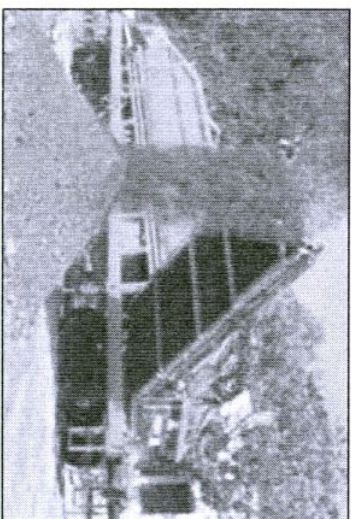
**DELHI METRO – RS13**  
Qty: 96 cars



# RAIL & METRO – MAINTENANCE VEHICLES



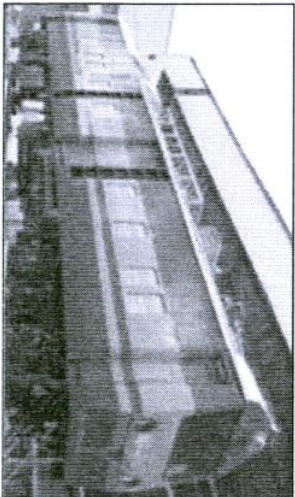
TRACK LAYING EQUIPMENT



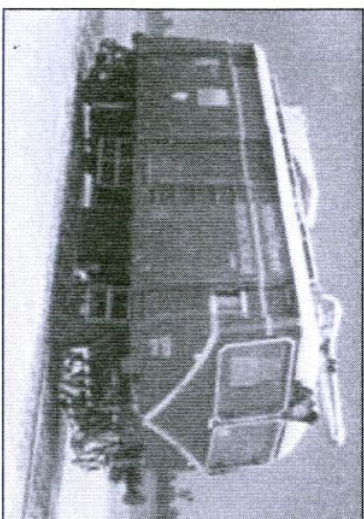
SPOIL DISPOSAL UNIT



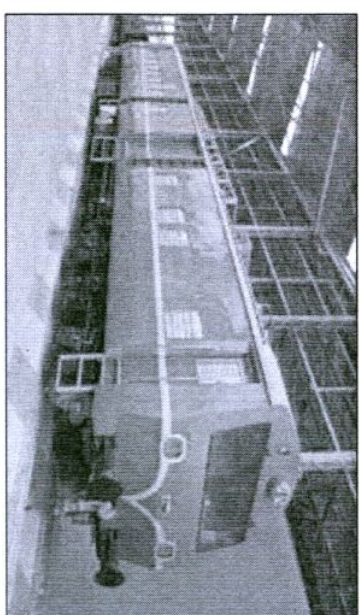
UTILITY VEHICLE



CATENARY MAINTENANCE  
VEHICLE- S.G./B.G.



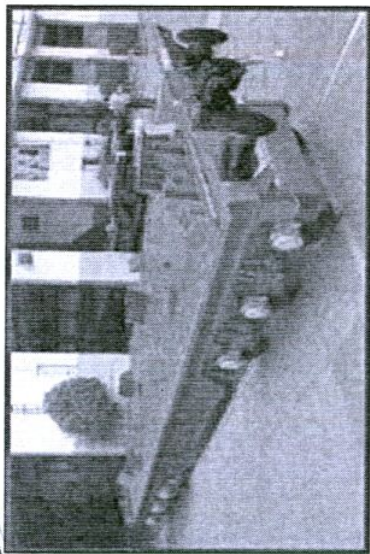
4W OHE



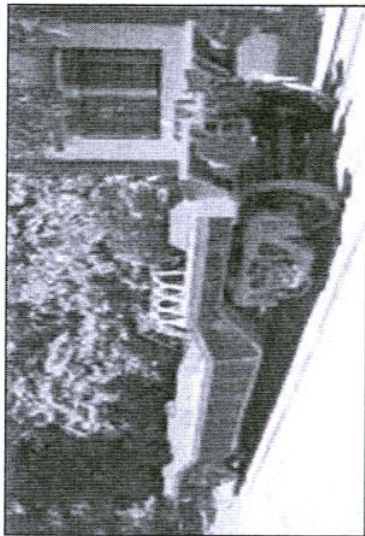
8W OHE - BG



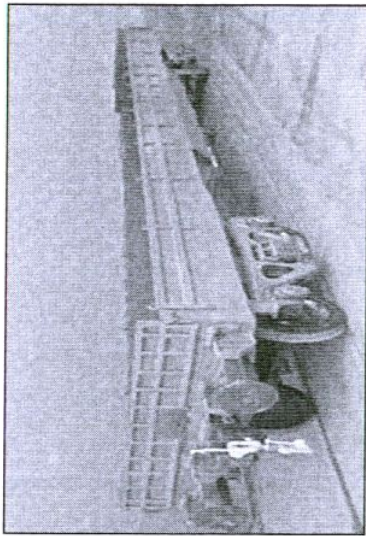
# RAIL & METRO – WAGONS



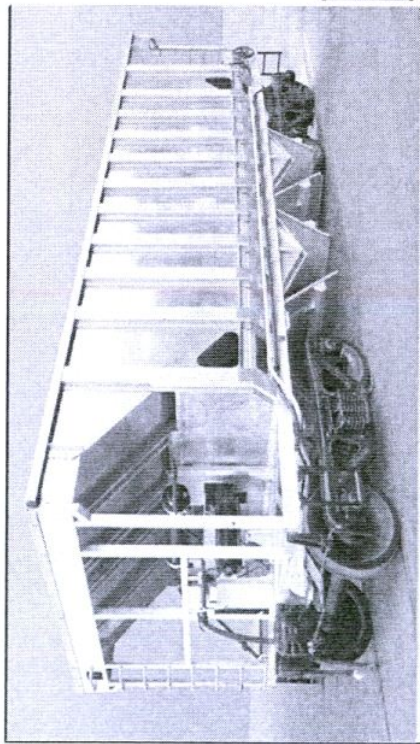
**BFAT WAGONS**



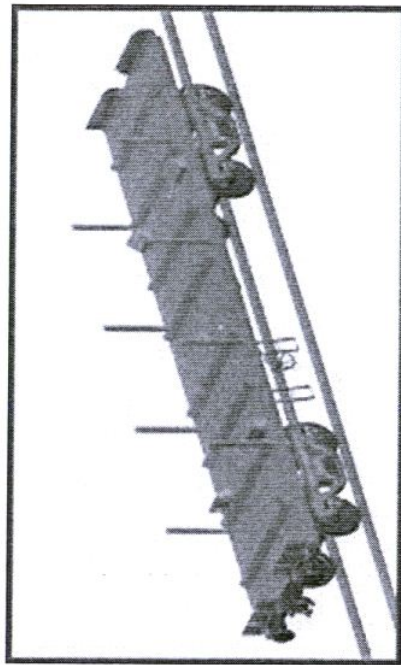
**BWTB WAGONS**



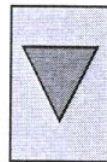
**BRSTN WAGONS**



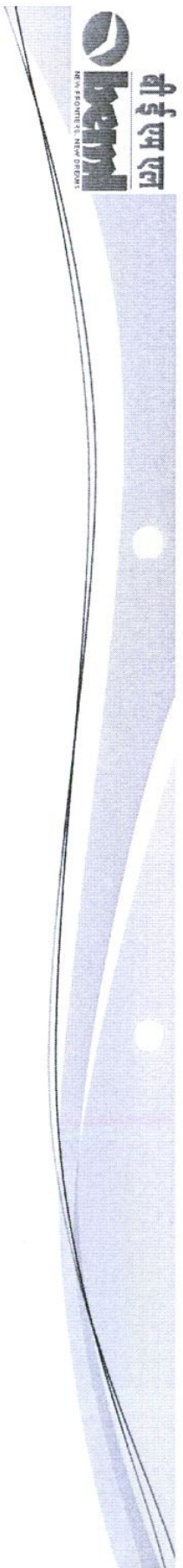
**ALUMINIUM WAGON**



**BOMN WAGONS**





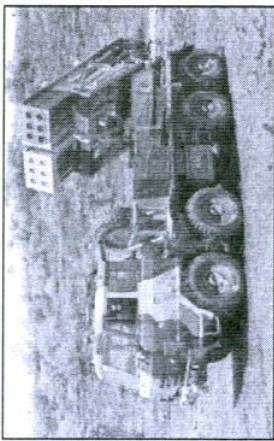


## DEFENCE & AEROSPACE PRODUCTS

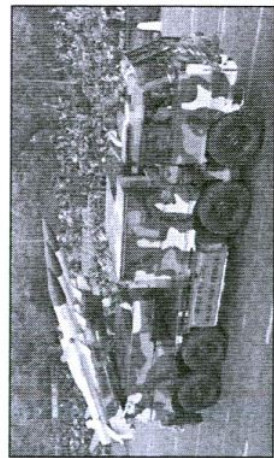


# HIGH MOBILITY VEHICLES

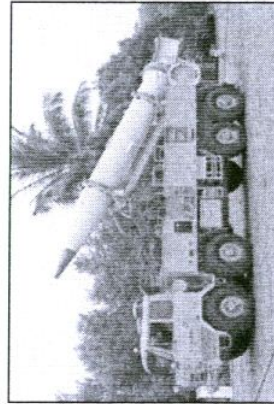
## MISSILE LAUNCHERS



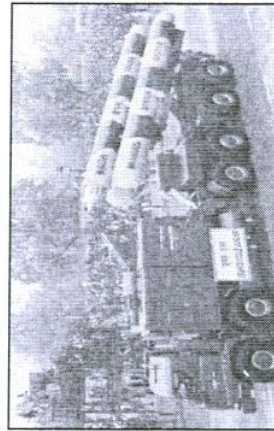
PINAKA



AKASH

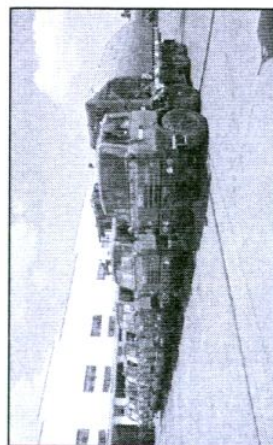


PRITHVI

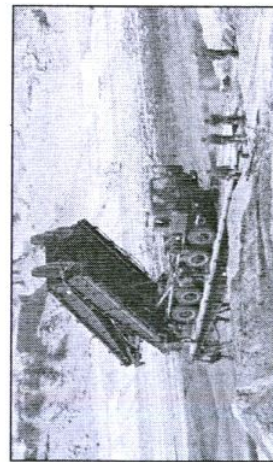


BRAHMOS

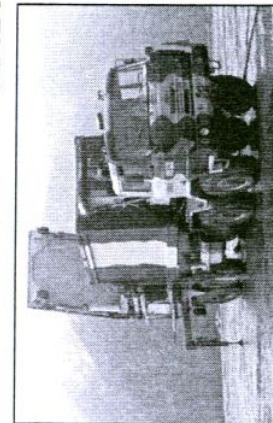
## BRIDGE SYSTEMS



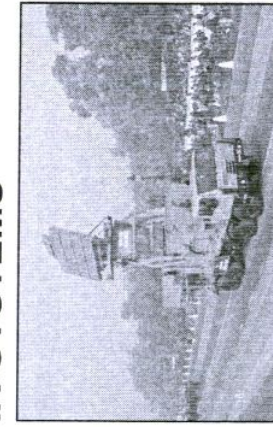
PONTOON MID  
STREAM (PMS)



SARVATRA

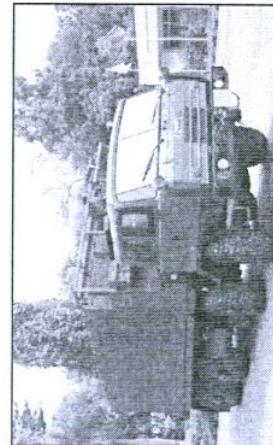


SWATI

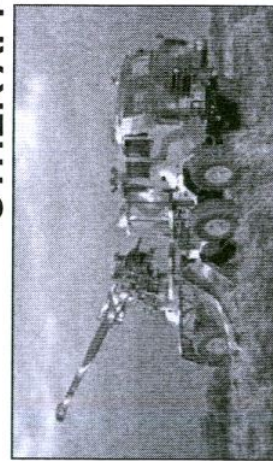


ROHINI

## OTHER APPLICATIONS



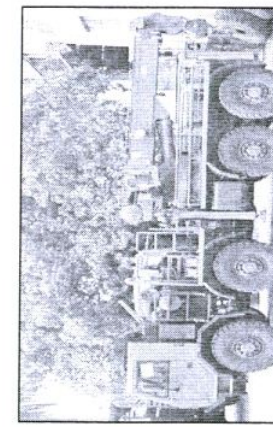
COMMAND POST VEHICLE



MOUNTED GUN SYSTEM



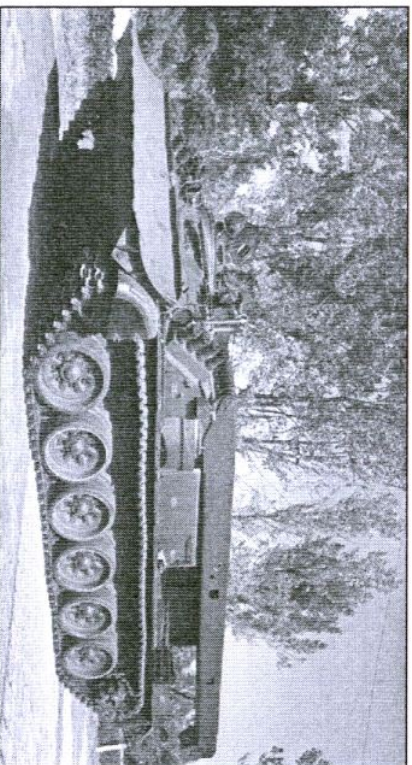
HEAVY RECOVERY  
VEHICLE



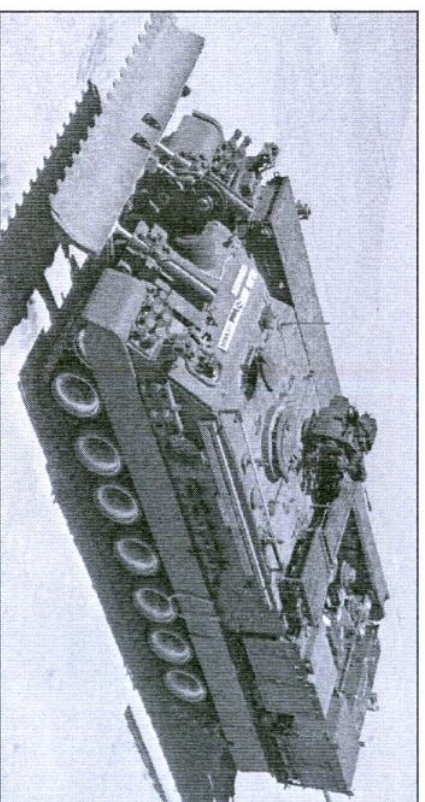
AMMUNITION HANDLING



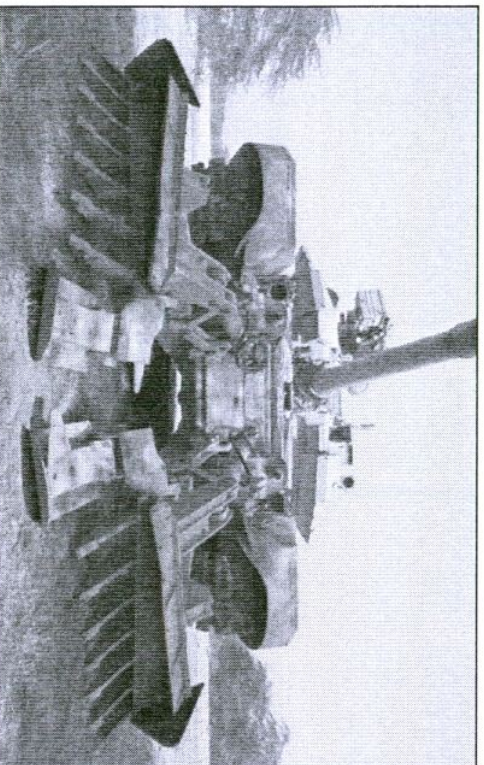
## COMBAT MOBILITY VEHICLES



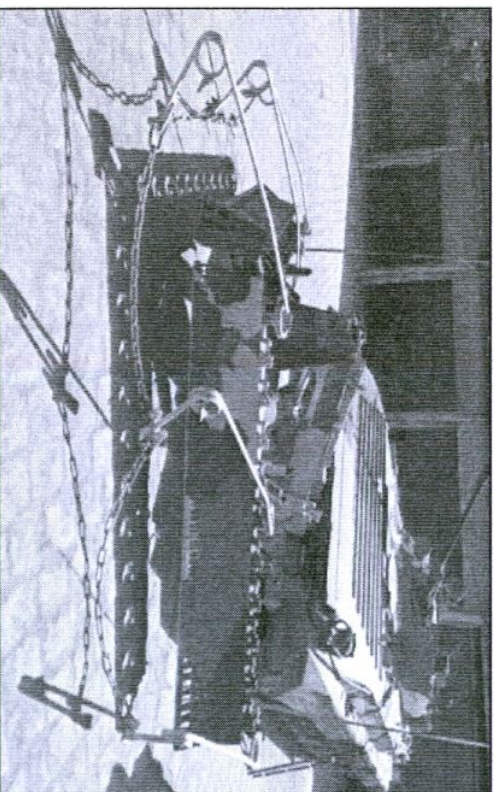
ARMOURED RECOVERY VEHICLE



ARMOURED REPAIR & RECOVERY VEHICLE



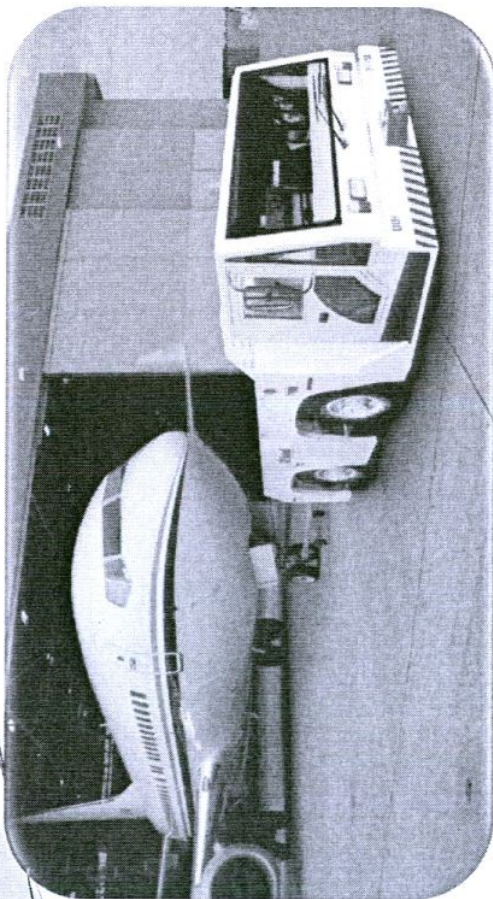
MINE PLOUGH



SURFACE MINE CLEARING SYSTEM



# AEROSPACE PRODUCTS – A SNAP SHOT



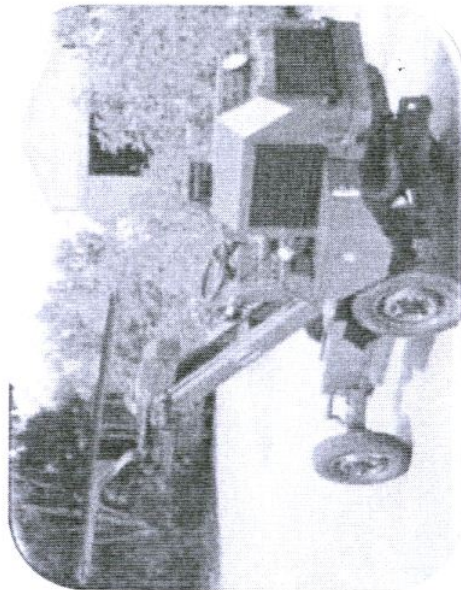
ATT BA28



BA 10 4X4



ATT BA10



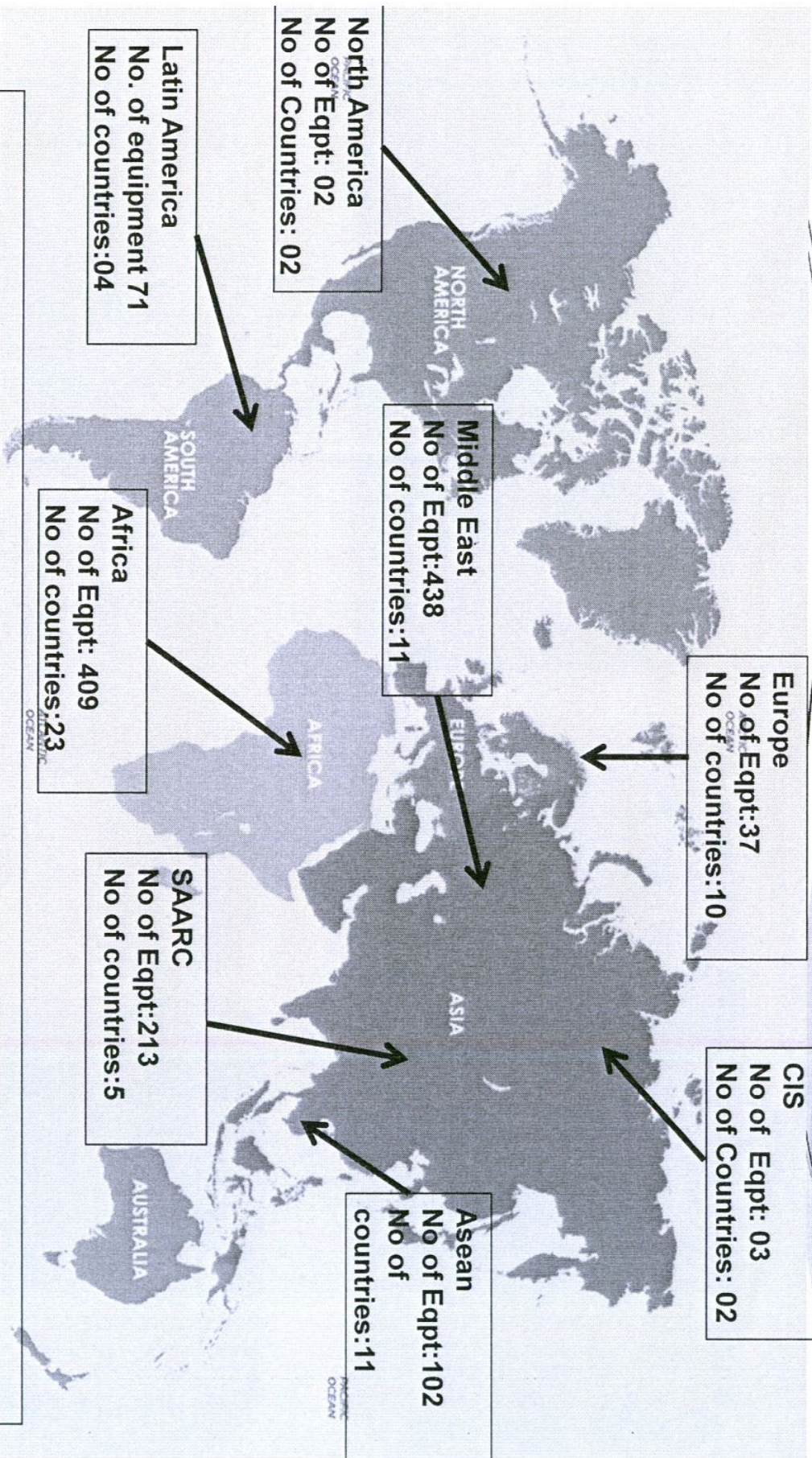
BHEEMA 1000 AWL



CRASH FIRE TENDER



# BEML'S GLOBAL MARKET



- EXPORTED OVER 1200 EQUIPMENT TO 68 COUNTRIES
- DEFENCE PRODUCTS EXPORTED TO ISRAEL, SURINAME, HONDARUS & BHUTAN
- RAILWAY PRODUCTS EXPORTED TO SRILANKA AND BANGLADESH
- MINING & CONSTRUCTION PRODUCTS ACROSS THE GLOBE



बी ई एम एल

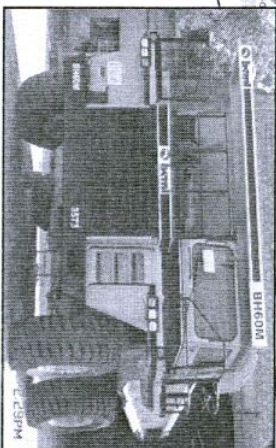


# BEML'S GLOBAL REACH COUNTRIES LIST

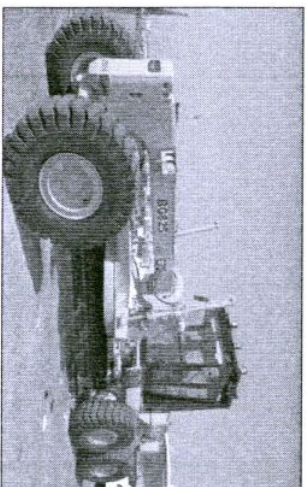
AFRICA	MIDDLE EAST	EUROPE & CIS	FAR EAST & NEIGH BOURS	LATIN AMERICA
ALGERIA	SYRIA	UK	INDONESIA	SURINAME
TUNISIA	UAE	ITALY	PACIFIC ISLANDS	NICARAGUA
MOROCCO	JORDAN	TURKEY	SRILANKA	BRASIL
SENEGAL	OMAN	BULGARIA	NEPAL	HONDURAS
SOUTH AFRICA	BAHRAIN	GREECE	MYANMAR	
TANZANIA	IRAN	NETHERLANDS	AUSTRALIA	
ZAMBIA	IRAQ	BELARUS	SINGAPORE	
ETHIOPIA	KUWAIT	RUSSIA	BHUTAN	
ZIMBABWE	YEMEN	CYPRUS	BANGLADESH	
GHANA	SAUDI ARABIA		AFGHANISTAN	
LIBYA	AFGANISTAN		PHILIPPINES	
SUDAN	QATAR		THAILAND	
ANGOLA	ISRASEL		MALAYSIA	
MALAWI			CHINA	
KENYA			TAIWAN	
NIGERIA			VIETNAM	
MALI				
TOGO				
DR CONGO				
UGANDA				
RWANDA				
GABON				
22	13	9	15	4



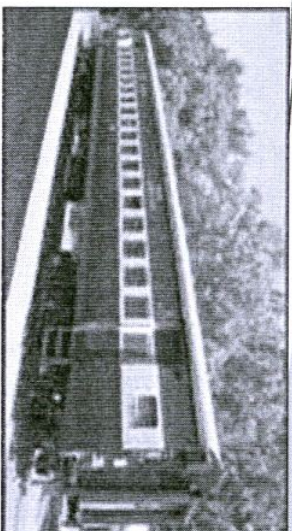
## MAJOR PRODUCTS EXPORTED



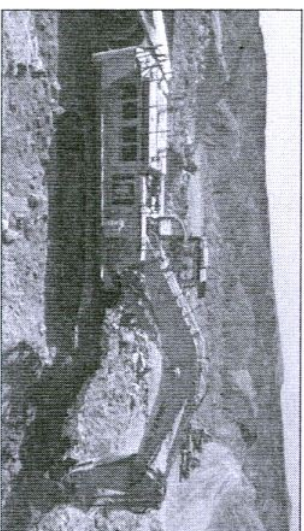
Dump Trucks-100 Ton  
(Application Phosphate in  
Tunisia and Coal in Thailand)



Motor Graders for Mining  
Road Preparation in Tunisia



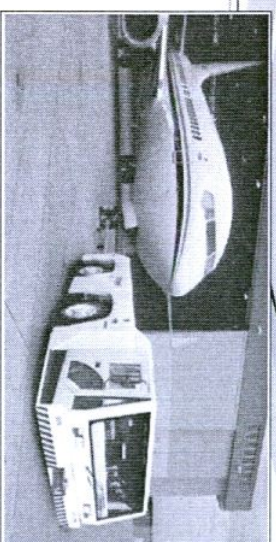
Railway Coaches



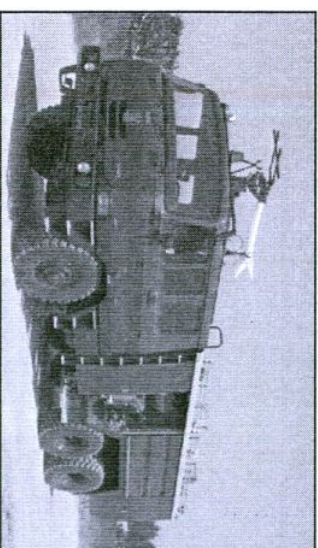
Excavator 160 Ton  
(Application coal in Zimbabwe)



Bull Dozer for coal  
application in Zimbabwe



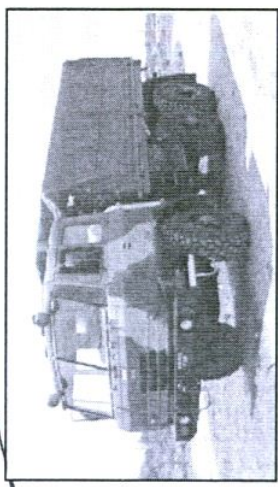
Air Craft towing tractors for  
pulling 75 Ton Aircraft



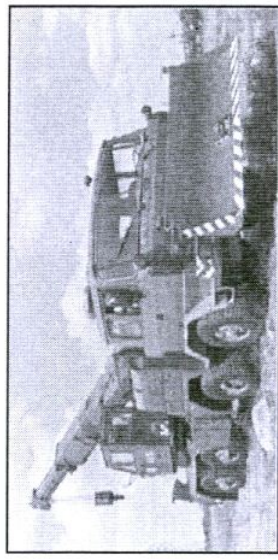
Crash Fire tender mounted  
on BEML truck 6x6



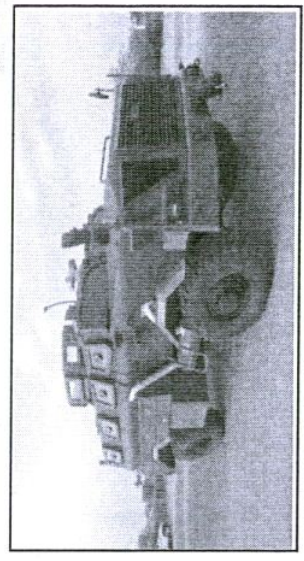
# TARGETED EXPORT PRODUCTS-DEFENCE



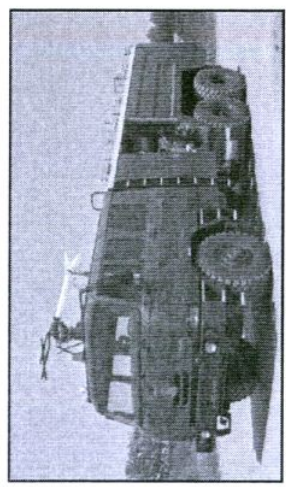
TATRA TRUCKS



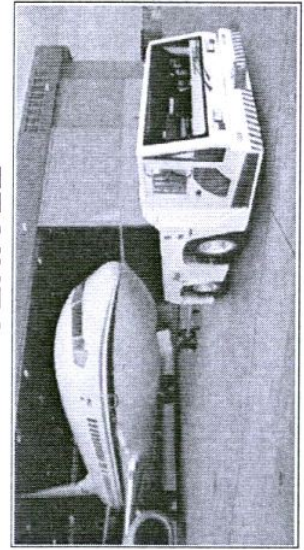
HEAVY RECOVERY  
VEHICLE



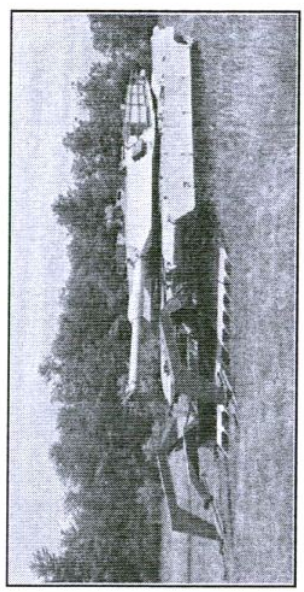
MEDIUM BULLET PROOF  
VEHICLE



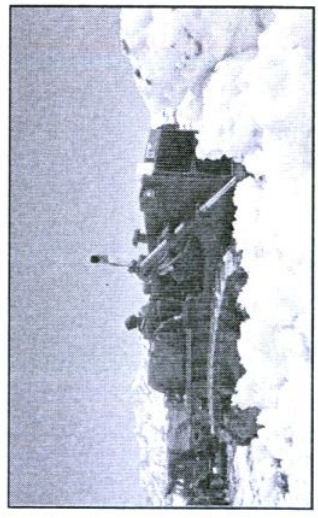
CRASH FIRE TENDER



AIRCRAFT TOWING  
TRACTOR



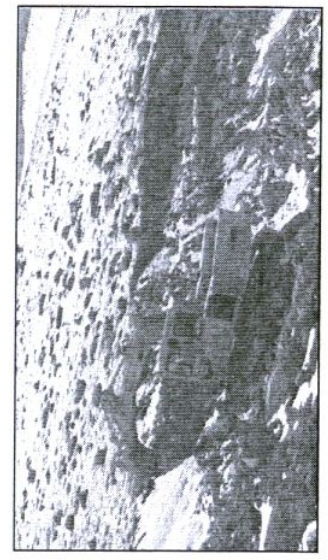
DEMINEING EQUIPMENT



BULLDOZER



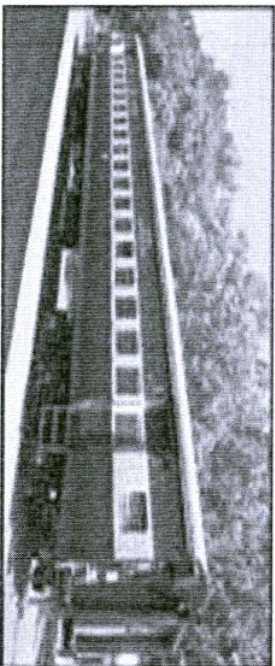
MOTOR GRADER



EXCAVATORS



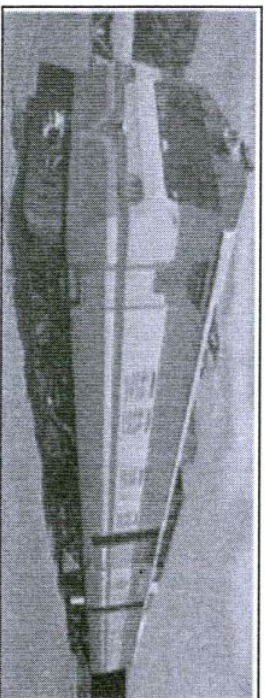
# TARGETED EXPORT PRODUCTS - RAIL & METRO



RAILWAY COACHES



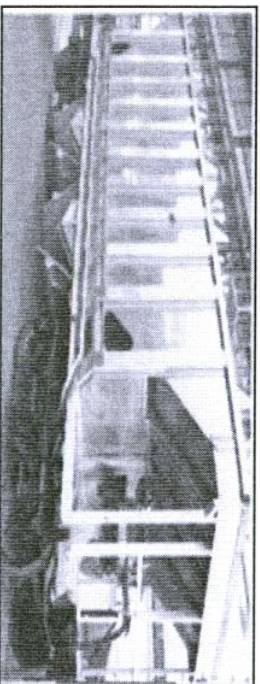
STAINLESS STEEL



MAINTENANCE



DEMU

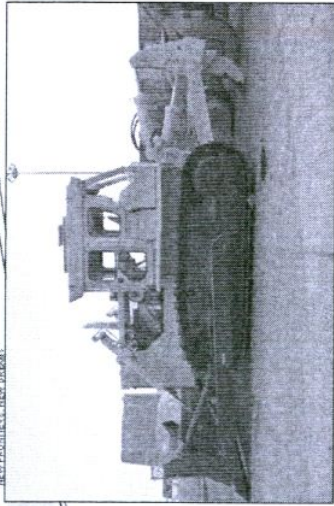


WAGONS



METRO COACHES

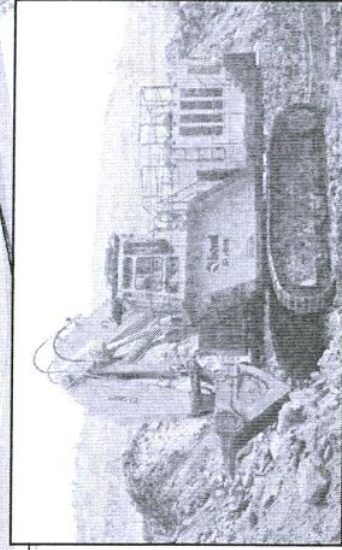




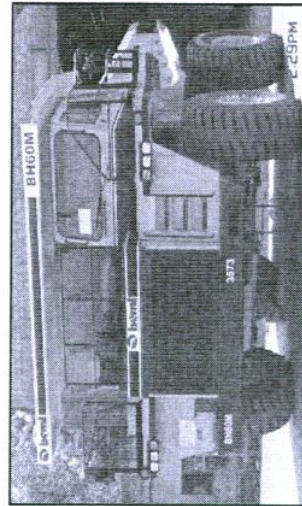
BULL DOZER



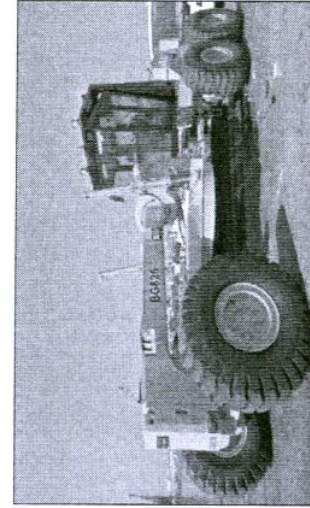
WHEEL LOADER



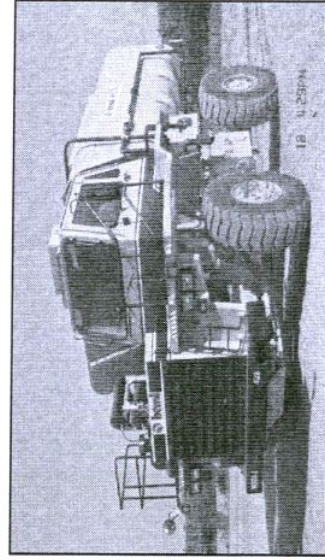
EXCAVATOR



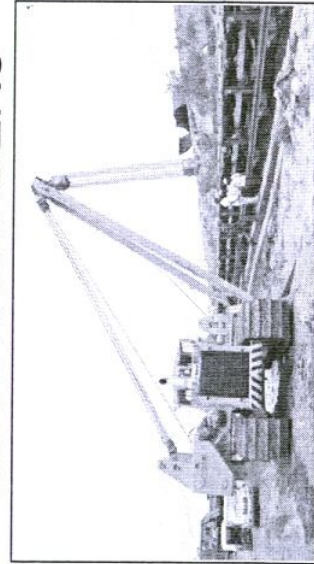
DUMP TRUCKS



MOTOR GRADERS



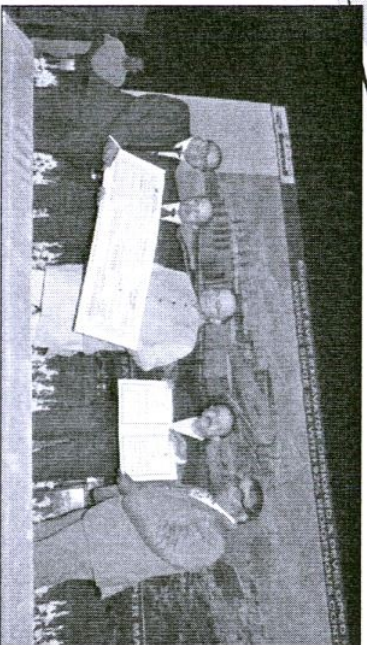
WATER SPRINKLER



PIPE LAYER



## AWARDS AND RECOGNITIONS



RECEIVING STAR EXPORTED AWARD

THEN RM PRESENTING THE RAKSHA MANTRI AWARD FOR  
BE1800E UNDER DESIGN EFFORT CATEGORY.

BELM RECEIVING SOUTHERN REGION EXPORT  
AWARD

BELM RECE





# *Thank You*



